

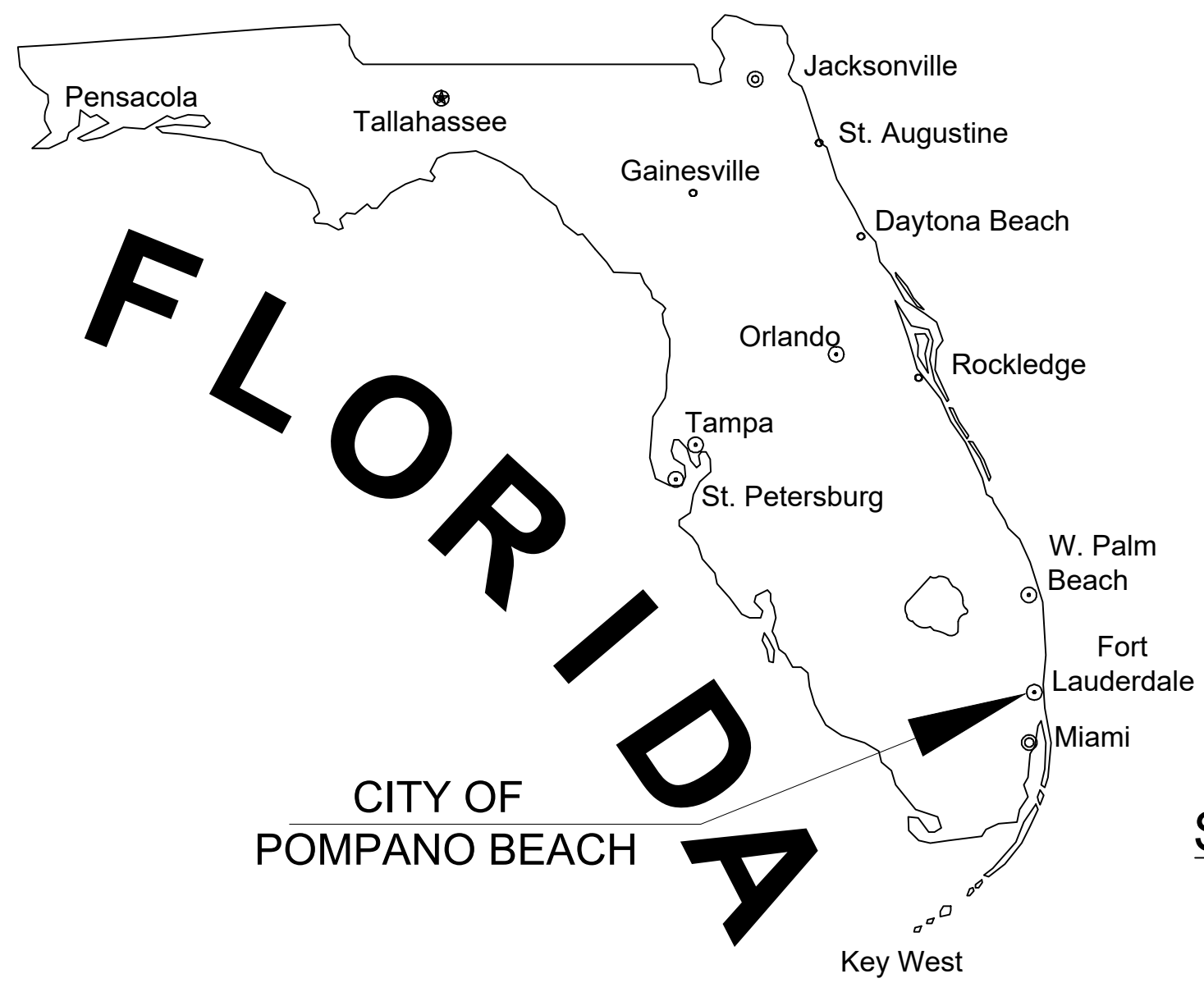
PRELIMINARY PLANS FOR

POMPANO BEACH

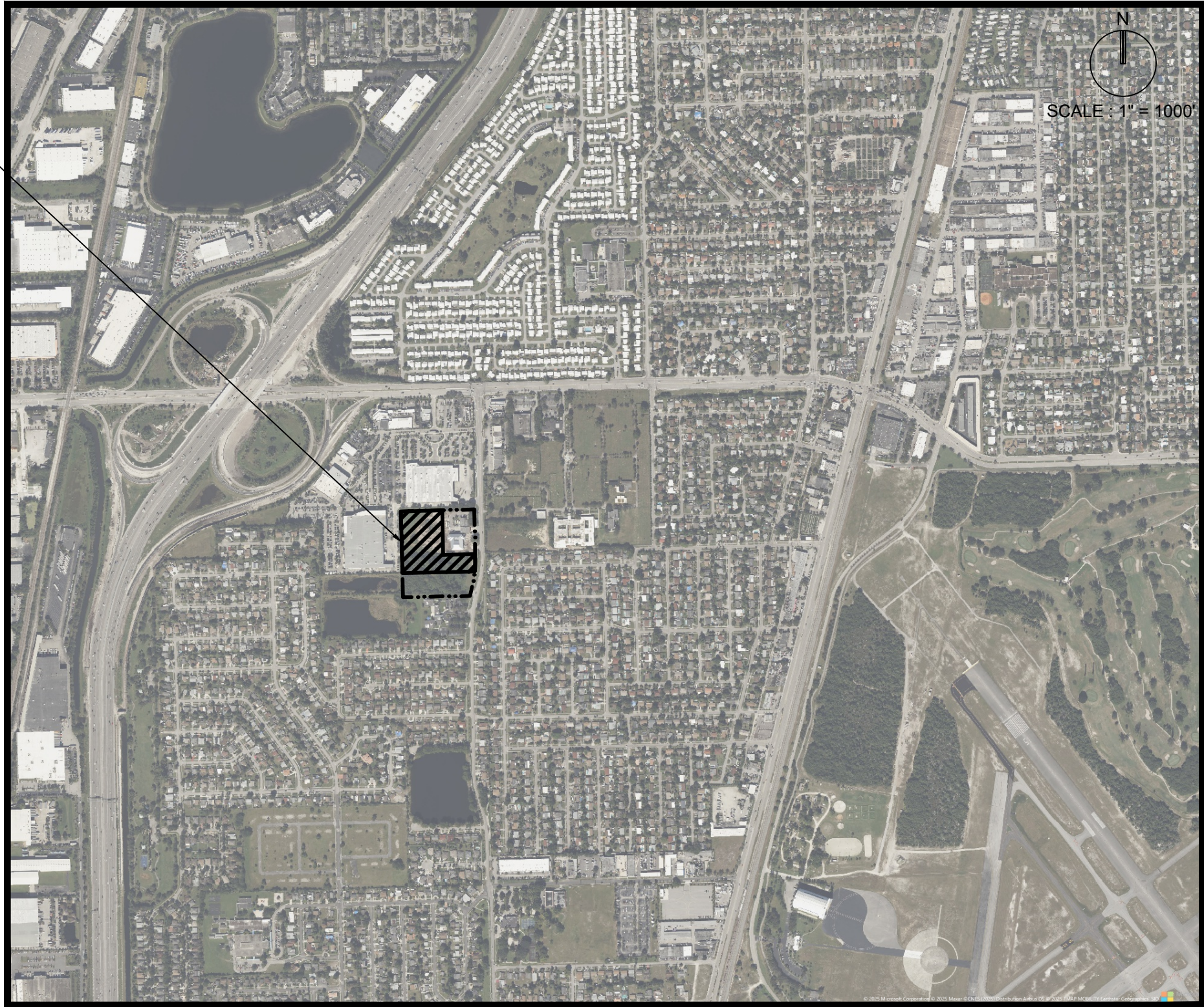
FIRE / EOC FACILITY

2121 NW THIRD AVENUE

POMPANO BEACH, FLORIDA 33060



SITE LOCATION



LOCATION MAP
SECTION 26, TOWNSHIP 48 S, RANGE 42 E
FOLIO #484226450010

LAND DESCRIPTION:

PARCEL "A", "FIRE STATION 61", ACCORDING TO THE PLAT THEROF, AS RECORDED IN PLAT BOOK 183, PAGE 203, OF THE PUBLIC RECORDS OF BROWARD COUNTY, FLORIDA.

INDEX OF SHEETS	
SHEET IDENTIFICATON	SHEET TITLE
GI-000	COVER SHEET
GI-001	LEGEND AND ABBREVIATIONS
GI-002	GENERAL CONSTRUCTION NOTES
GI-003	CONSTRUCTION SPECIFICATIONS
CG-101	EROSION CONTROL PLAN
CG-501	EROSION CONTROL DETAILS
CD-101	DEMOLITION PLAN
CP-101	PAVING, GRADING, AND DRAINAGE PLAN
CP-501 TO CP-504	PAVING, GRADING, AND DRAINAGE DETAILS
CU-101	WATER AND SEWER PLAN
CU-501 TO CU-504	WATER AND SEWER DETAILS
CM-101	PAVEMENT MARKING AND SIGNAGE PLAN
CM-501	PAVEMENT MARKING AND SIGNAGE DETAILS

RELATIONSHIP BETWEEN
NGVD 1929 AND NAVD 1988

DATUM	DIFFERENCE	ELEV.
NGVD 1929	+1.57 FEET	1.57'
NAVD 1988		0.00'

ALL ELEVATIONS SHOWN ON THESE PLANS ARE
BASED ON NAVD 1988 DATUM

FEMA FLOOD ZONE:

THE PROPERTY IS LOCATED WITHIN FLOOD ZONE AH 13, AH 15, AND X, AS SHOWN ON F.I.R.M. NUM. 12011C0170H, BEARING A MAP EFFECTIVE DATE OF 8/18/2014.

THESE PLANS MAY HAVE BEEN
REDUCED IN SIZE BY REPRODUCTION.
THIS MUST BE CONSIDERED WHEN
OBTAINING SCALED DATA.



PREPARED FOR:
CITY OF POMPANO BEACH
353 MARTIN LUTHER KING, JR. BLVD,
POMPANO BEACH, FL 33060



PROJECT No. 10647.01 OCTOBER 10TH, 2025

MICHAEL PINZON, P.E.
FLORIDA REG. NO. 95668
(FOR THE FIRM)